

ARARAT & STAWELL LINE

Scale 4 Chains to 1 Inch

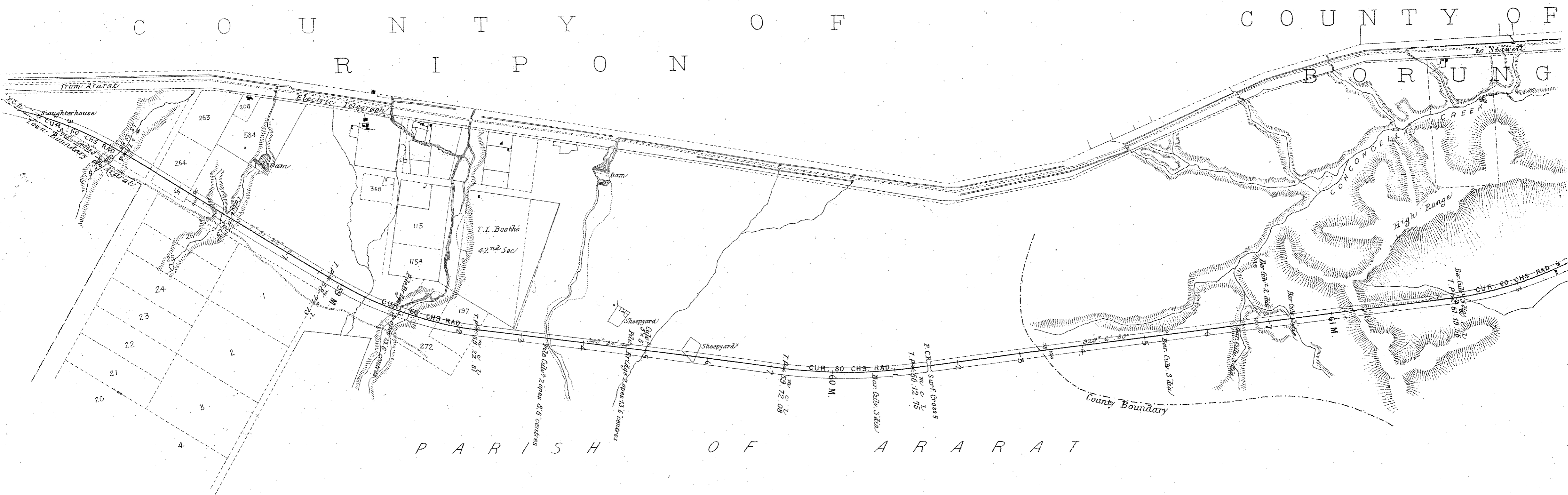
CONTRACT N° 592.
SHEET N° 26.



ARARAT & STAWELL LINE

Scale 10 Chains to 1 Inch

CONTRACT N^o 592
SHEET N^o 27



ARARAT & STAWELL LINE

Scale 10 Chains to Inch

CONTRACT N° 592
SHEET N° 28

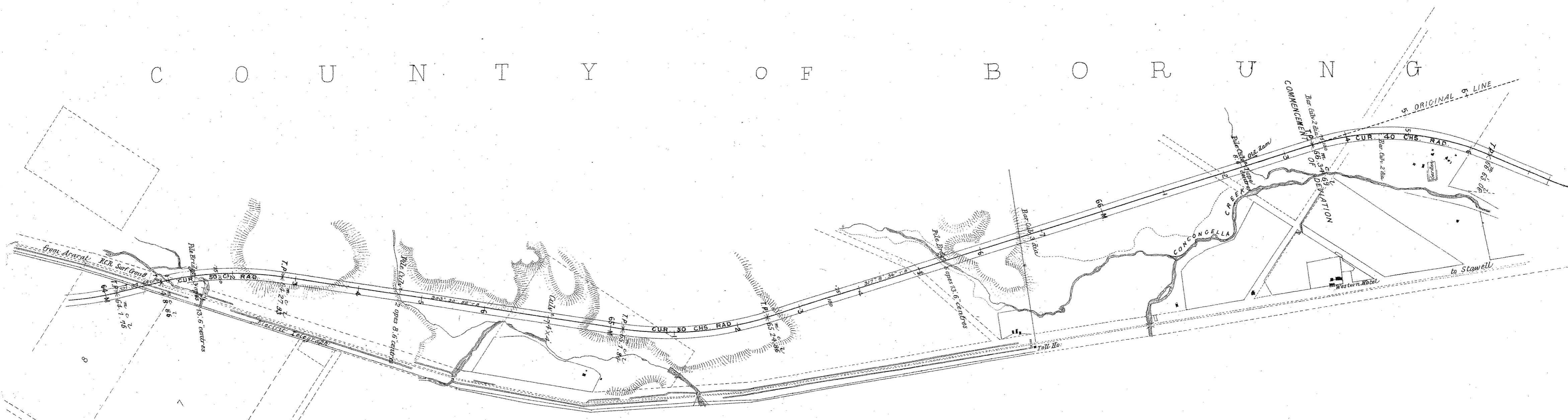


ARARAT & STAWELL LINE

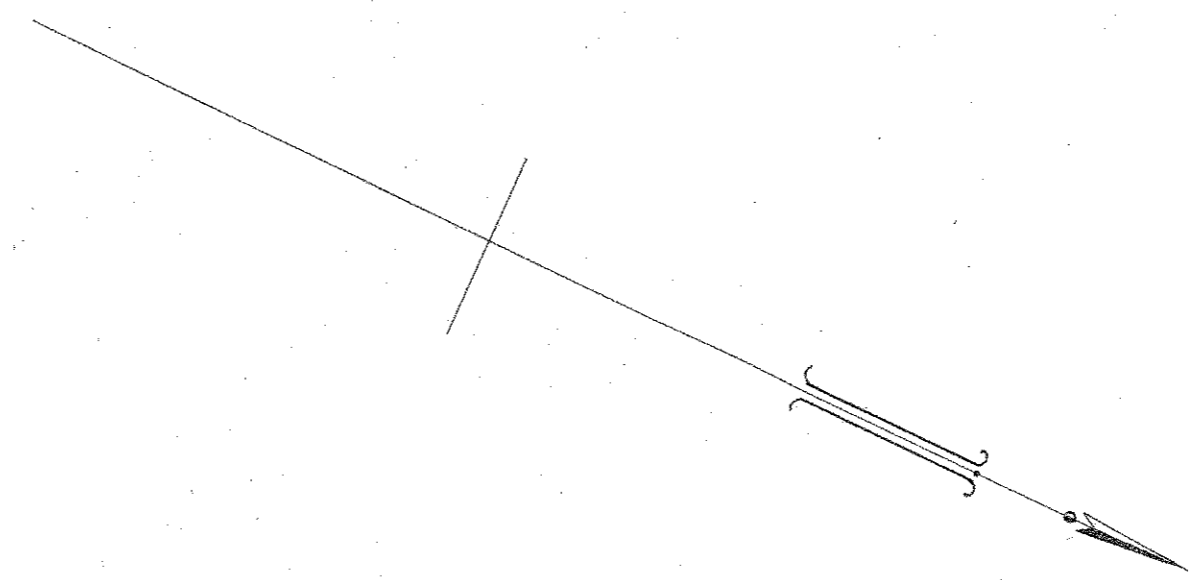
Scale 10 Chains to 1 Inch

CONTRACT N°592
SHEET N°29

C O U N T Y O F B O R U N G



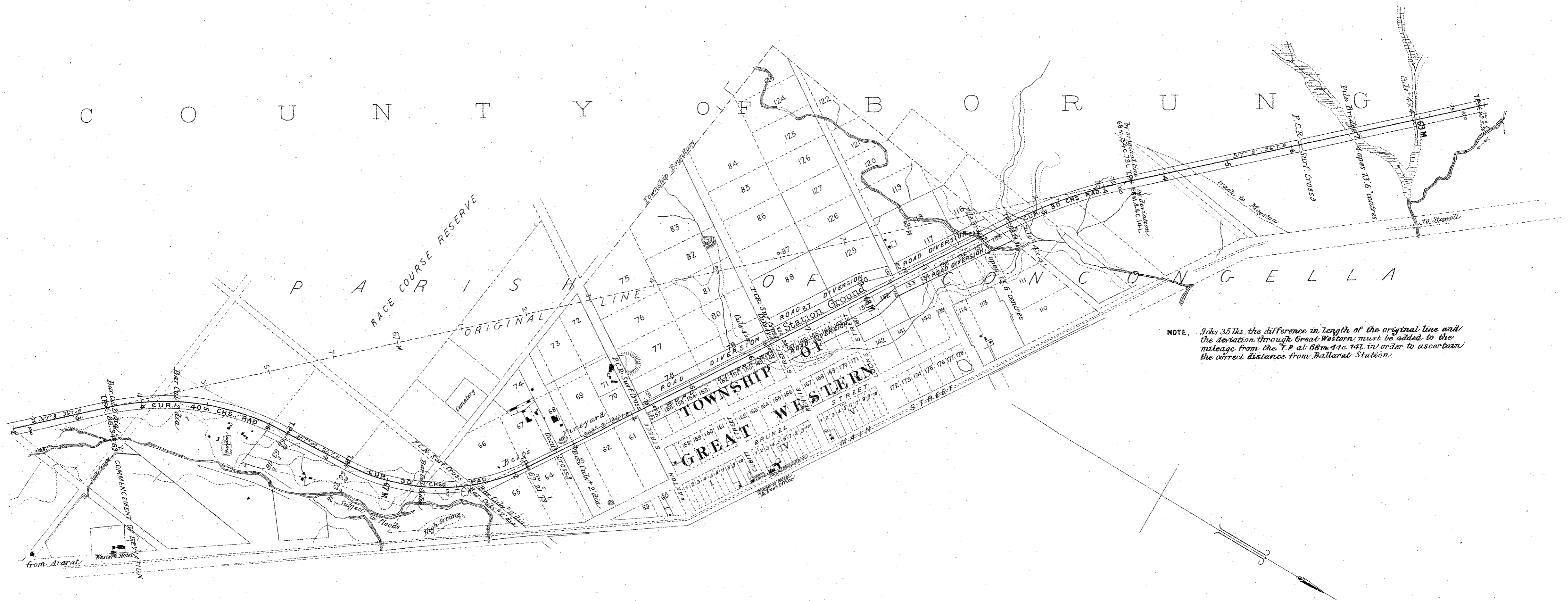
P A R I S H O F C O N C O N G E L L A



ARARAT & STAWELL LINE

Scale 10 Chains to 1 Inch

CONTRACT N° 592
SHEET N° 30



ARARAT & STAWELL LINE

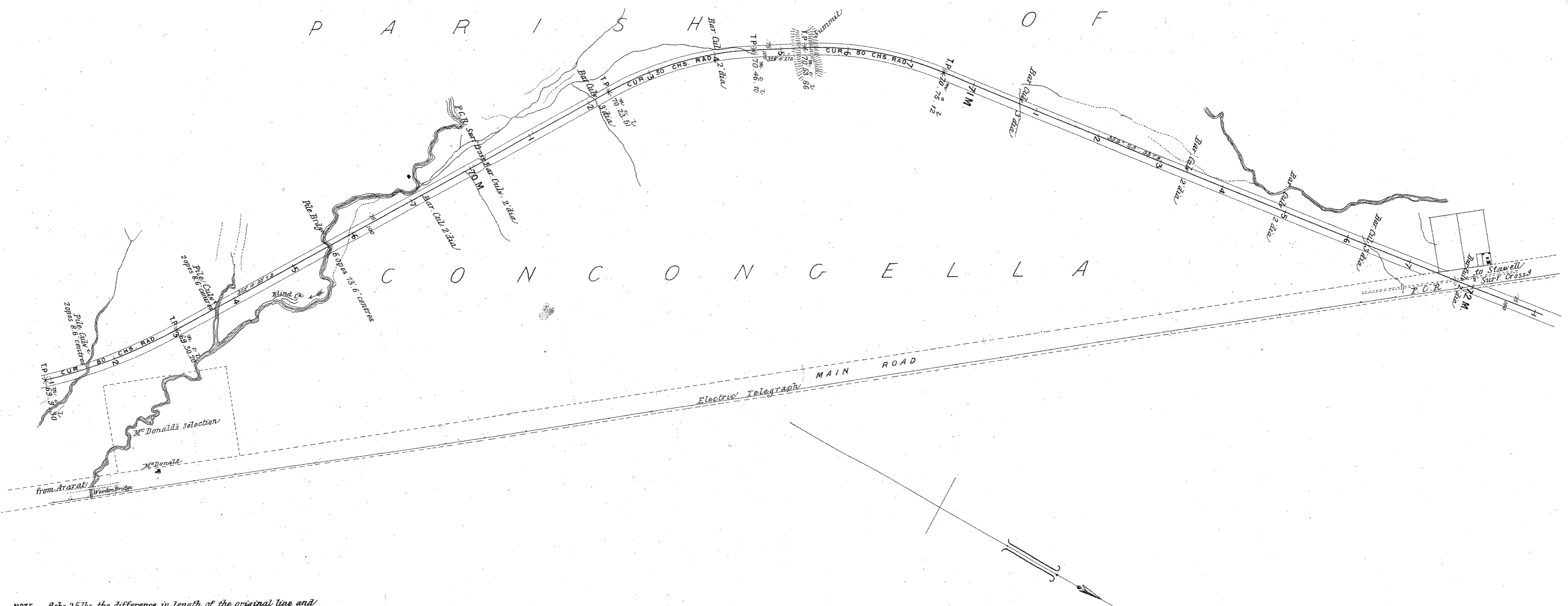
Scale 10 Chains to Inch

CONTRACT N^o592
SHEET N^o31

C O U N T Y O F B O R O U G H

P A R I S H O F

C O N C O N G E L L A

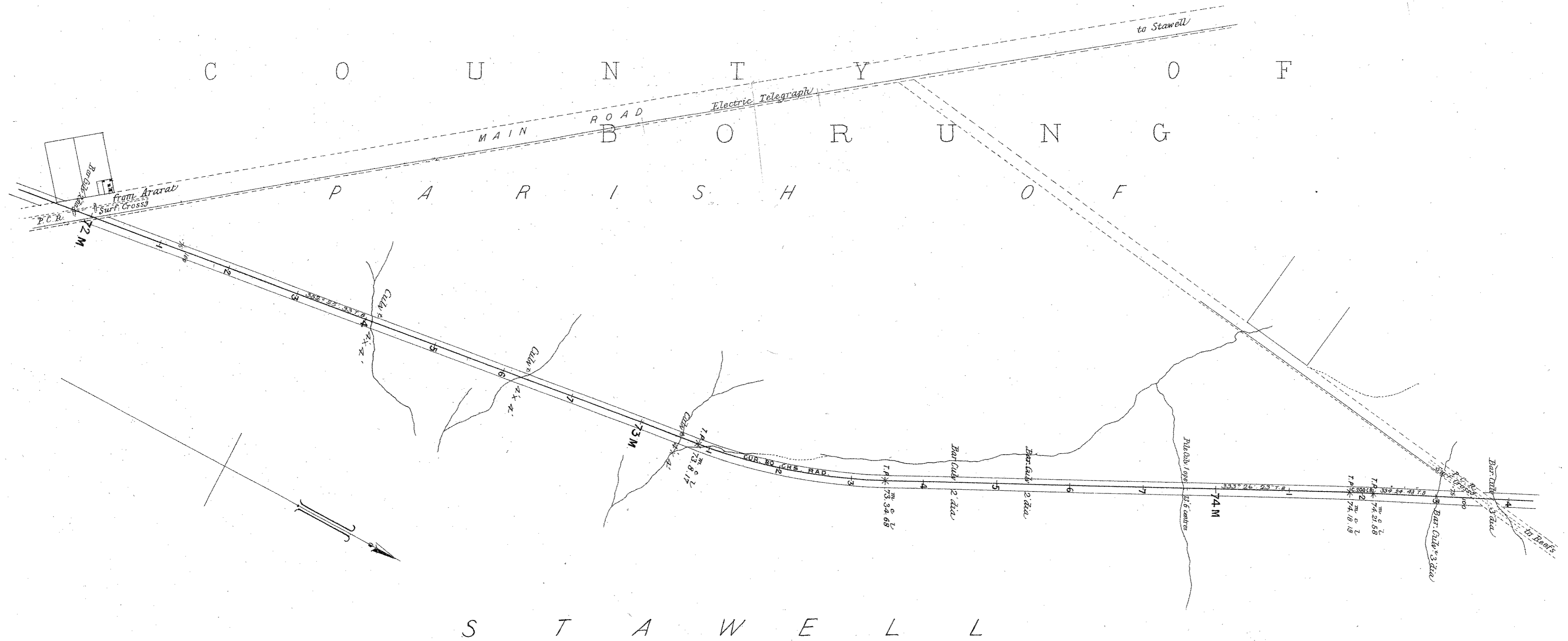


NOTE, 9chs 35 lks. the difference in length of the original line and the deviation through Great Western, must be added to the mileage from the T.P. at 68m. 44c. 147. in order to ascertain the correct distance from Ballarat Station.

ARARAT & STAWELL LINE

Scale 10 Chains to 1 Inch

CONTRACT N^o592
SHEET N^o32

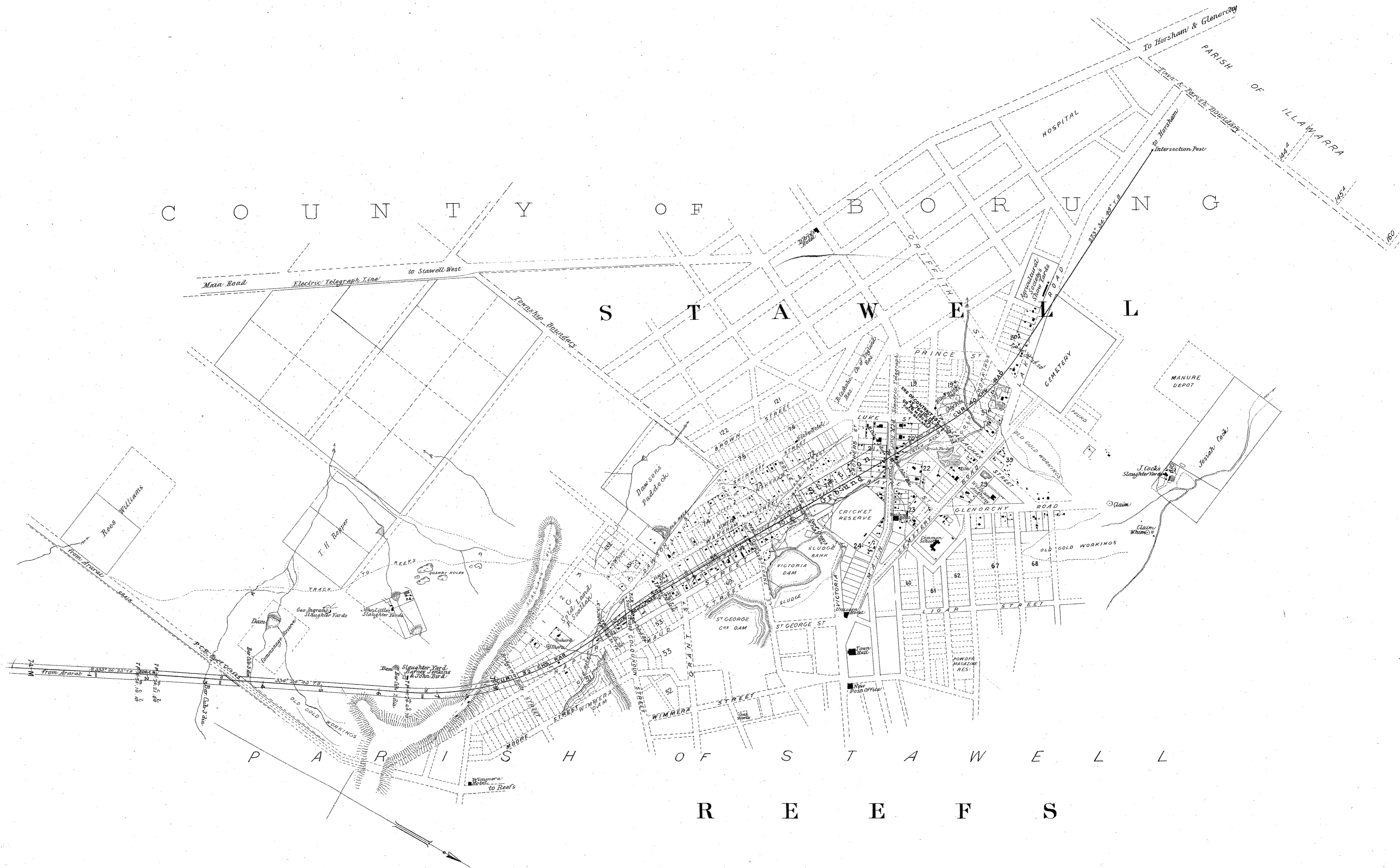


NOTE. 9chs 35lks the difference in length of the original line and the deviation through Great Western; must be added to the mileage from the T.P. at 68m.44c 141. in order to ascertain the correct distance from Bullarab Station.

ARARAT & STAWELL LINE

Scale 10 Chains to 1 Inch

CONTRACT N^o 592.
SHEET N^o 33.



NOTE, 9chs 35ls, the difference in length of the original line and the deviation through Great Western, must be added to the mileage from the T.P. at 68m 44c 101, in order to ascertain the correct distance from Ballarat Station.