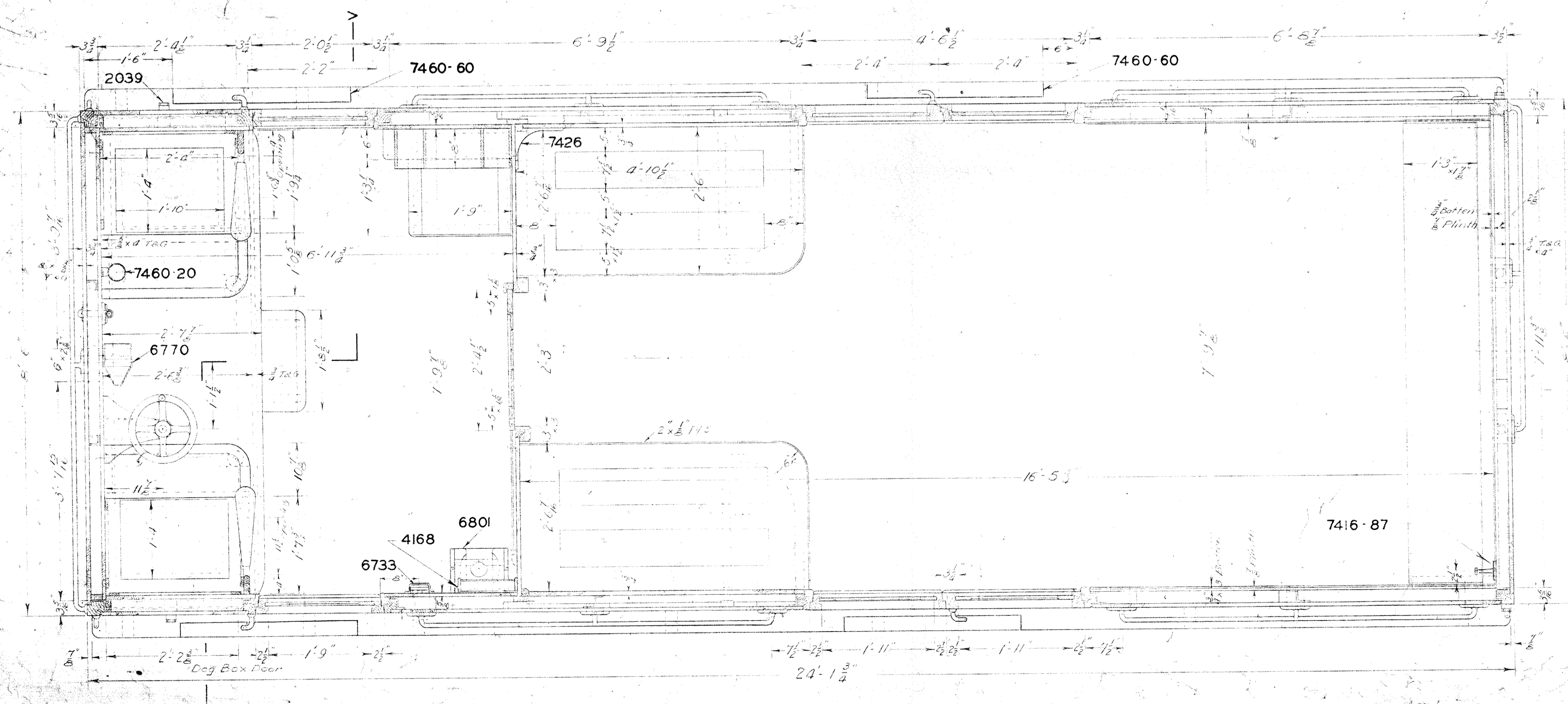
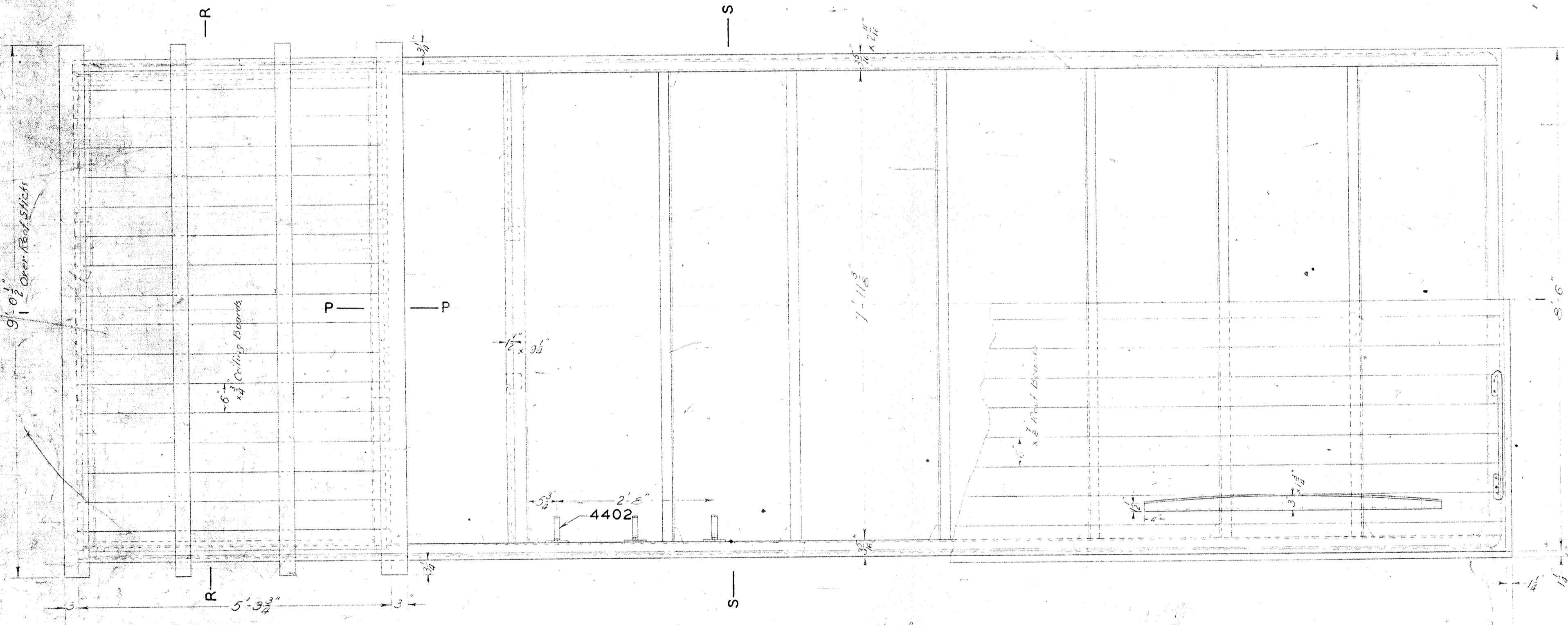
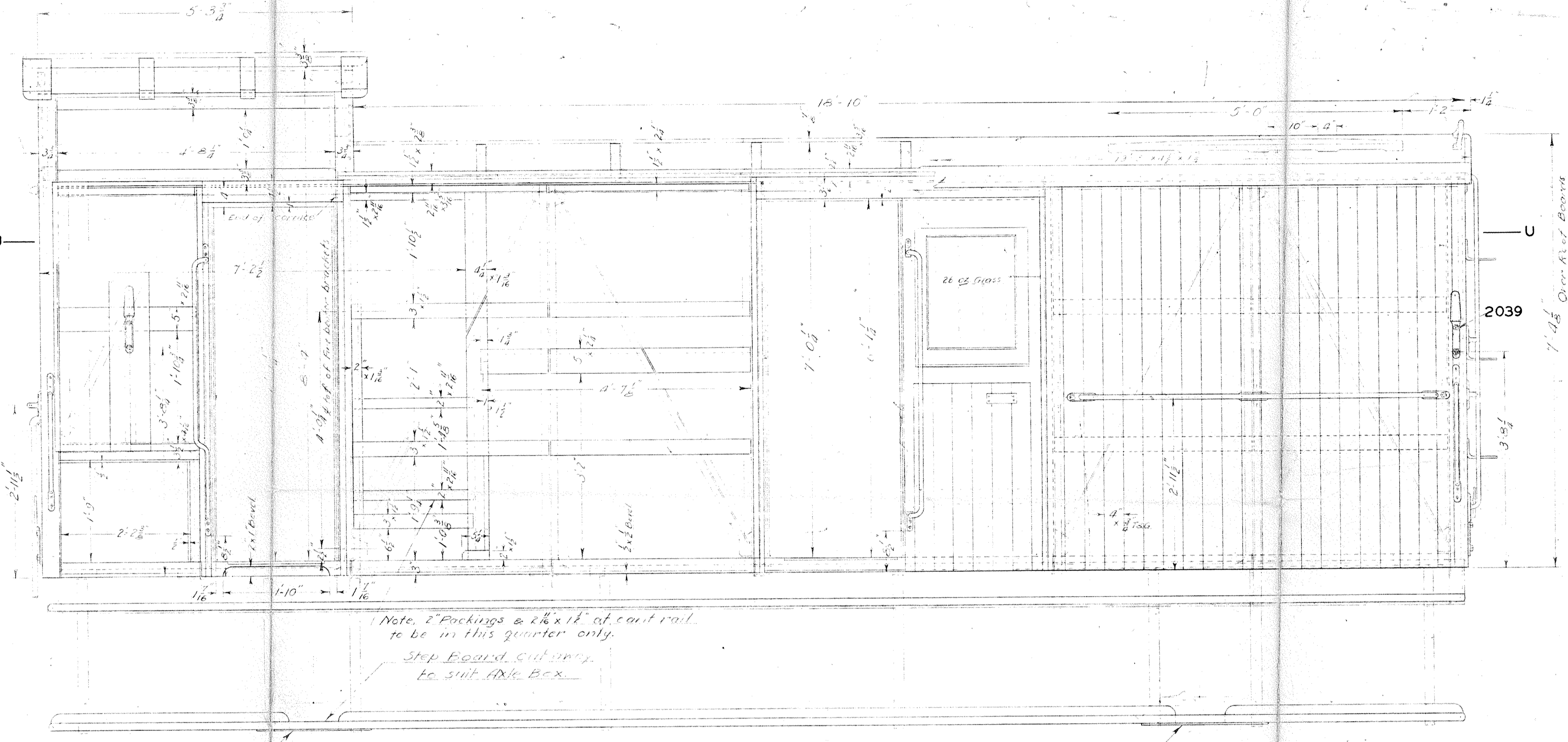


AT T-T

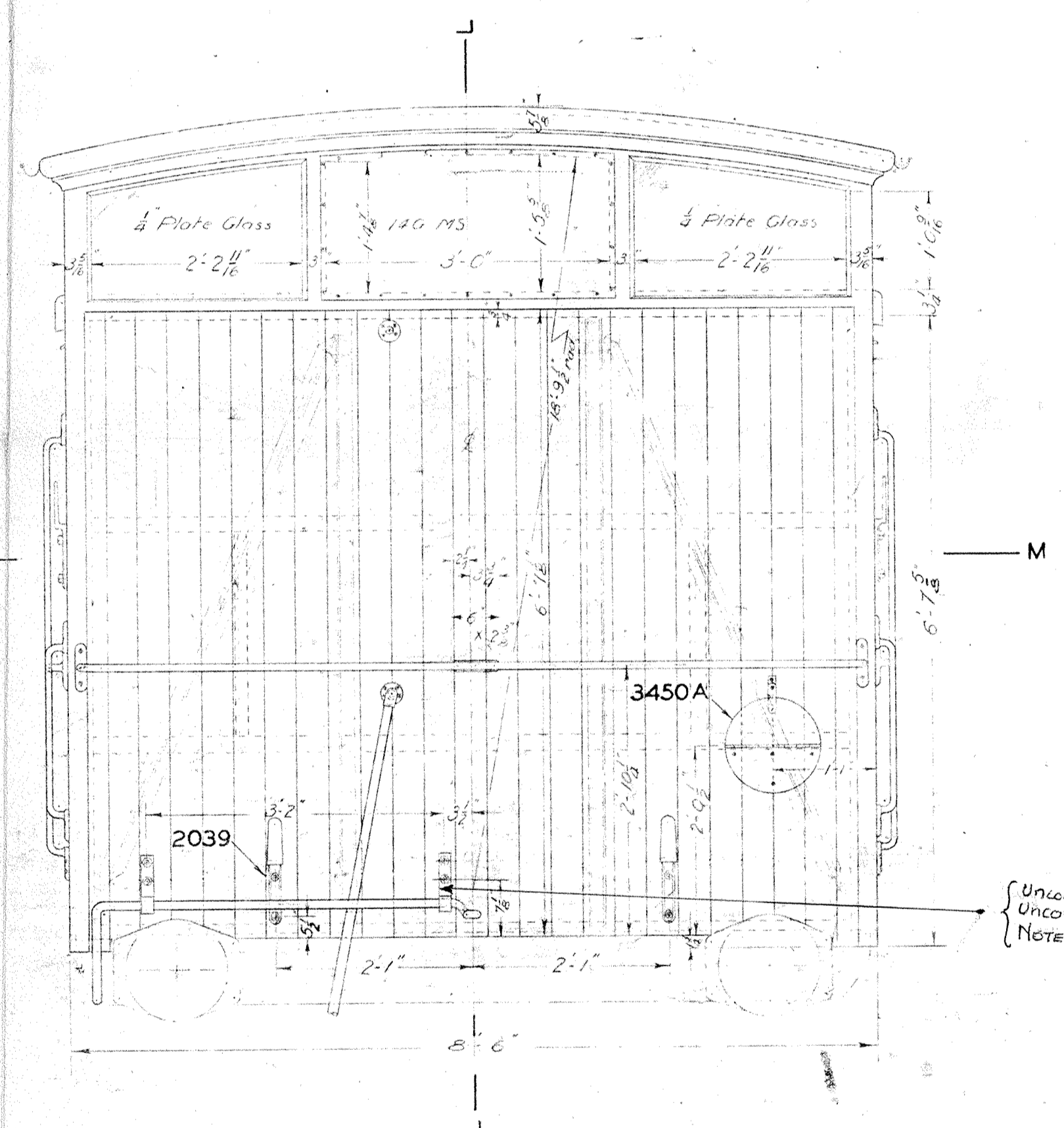
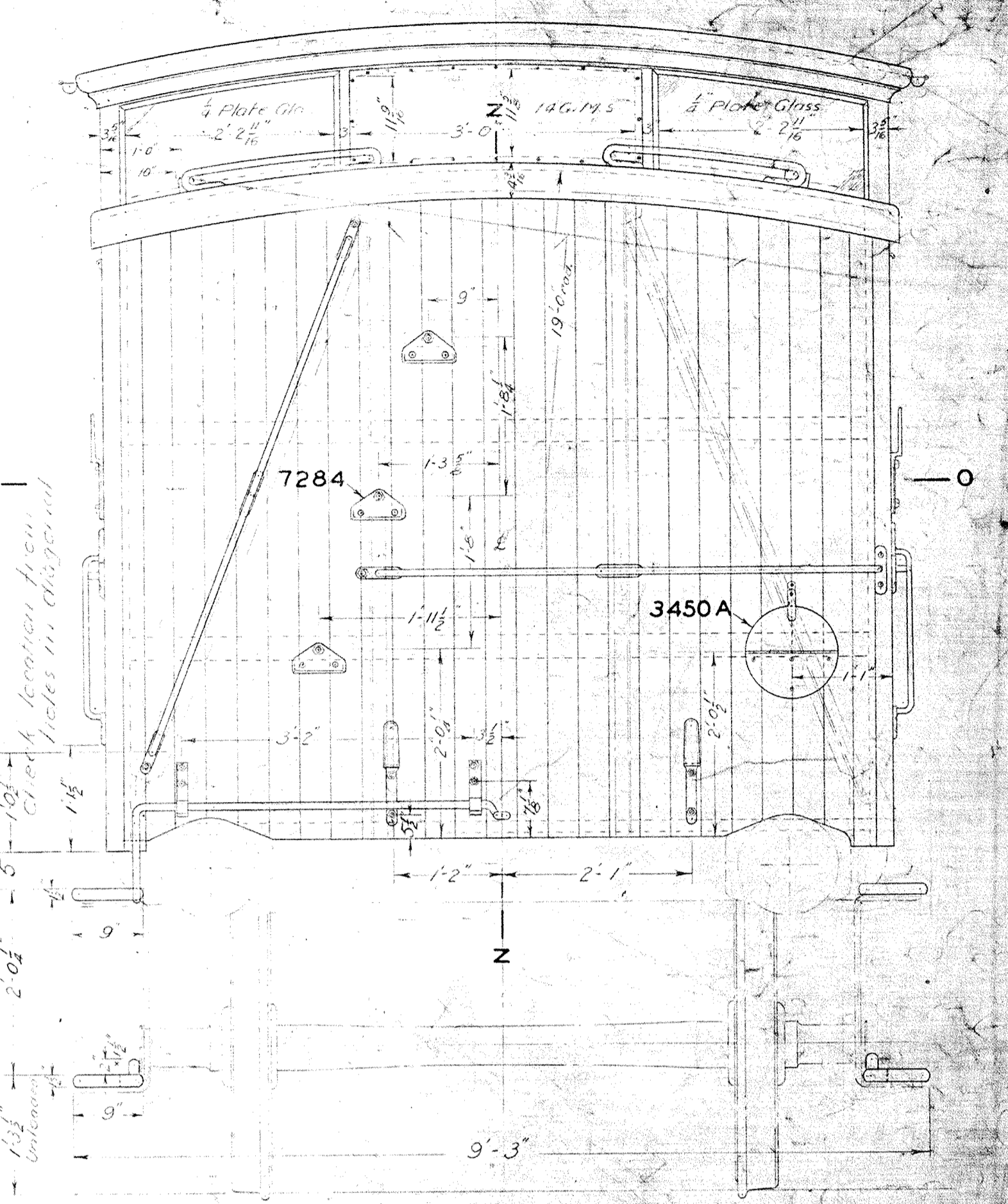


AT U-U



7460-62

7460-63



AT V-V

DETAIL DRAWINGS	DRG. NO
Side Wall Sections A-A to F-F	7426-1 to 29
G-G to K-K	30 to 60
End Wall & Canopy Sections L-L to P-P	7432-1 to 133
Pool Sections R-R to S-S	7439-1 to 111
Cross Partitions & Sliding Door	7443-1 to 112
Guard & Gears Doors	7445-1 to 26
Seats & Platforms	7459-1 to 30
Canopy Glasses	7467
Interior Details (5 Sheets)	7460-1 to 63
Gears Comp. Lamp Bracket & Studs	7426-1 to 9
Hand Lamp Bracket	6710
Fire Extinguisher Bracket	6801
Fire Extinguisher	6733
Hinged Tail Disc	3450-A
End Steps	7284
Side & End Lamp Brackets	2039
Steel Structure	Z 1
Individual Fittings	7416-1 to 83
Ladder Brackets	4402
Emergency Tool Box (Complete)	4168
Drivers Seat Catch	7416-87 102 & 89

LETTER	DATE	REVISION
	22-42	Amendments as shown on detail sheets. GRM

VICTORIAN RAILWAYS
 ENGINEER
 Z. VANS
 7437
 GENERAL ARRANGEMENT
 DRAWN GRM
 CHECKED A.J.H. DATE 8-8-40